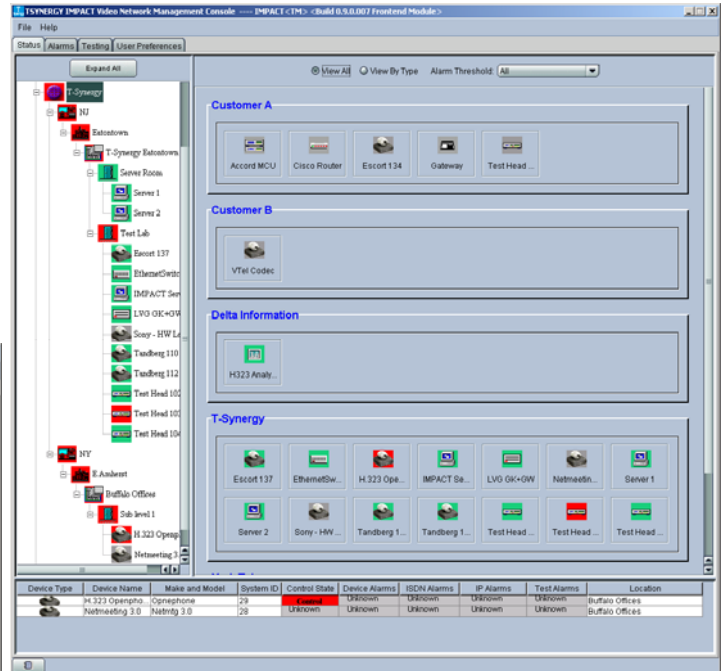
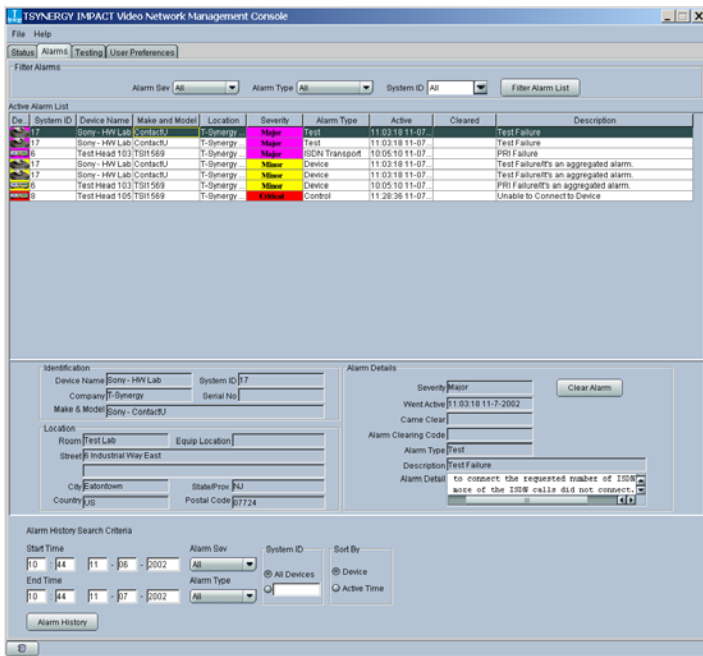




H.323/H.320 Network Management System

Carrier/Enterprise-Grade Scalability

- Thousands of endpoints
- Multiple subnetworks
- Multiple simultaneous users
 - Networked workstations
 - Centralized, remote, and localized network testing
 - Automatic resource allocation
- Multiple simultaneous tests
 - Automatic resource optimization



Network Fault and Alarm Monitoring

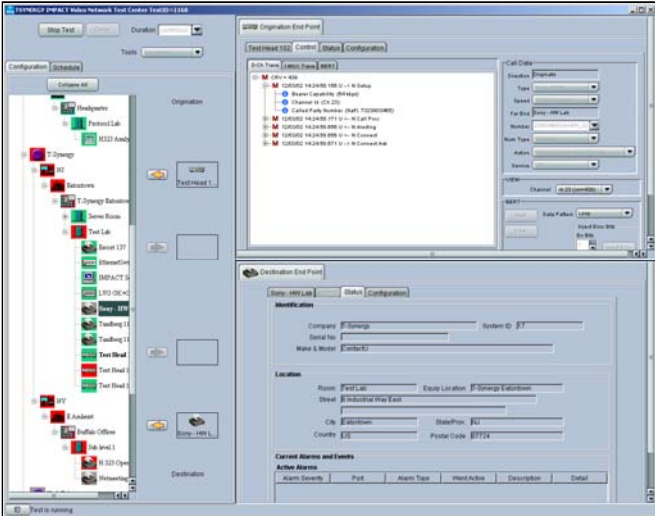
- Communications failures
- Device alarms
- Test and protocol alarms
- Export alarms to other fault monitoring systems

Technology and Vendor Independent User Interface

- Select origination and destination endpoints
- Test equipment is just another endpoint
- Data transport, protocols, and interworking handled automatically
- E.164 alias and firewall transparency

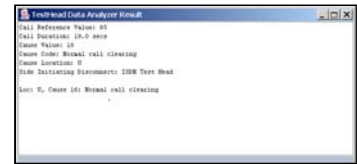
T-Synergy Corporation Confidential

This document is confidential and proprietary. It is the property of T-Synergy Corporation and shall not be reproduced or copied or used in whole or in part as the basis for manufacture or sale of items without written permission. The information in the document is subject to change without notice and should not be construed as a commitment by T-Synergy Corporation. T-Synergy Corporation assumes no responsibility for any errors that appear in this document.



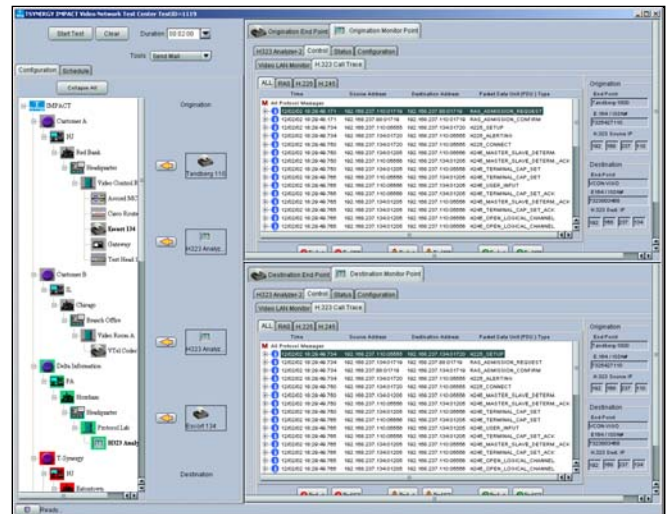
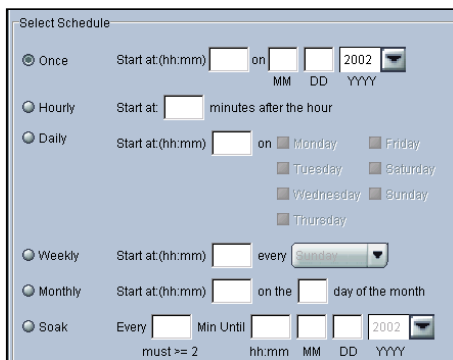
Reactive Troubleshooting

- Selection of endpoint automatically determines appropriate test equipment and network elements
- Selection of endpoint(s) automatically includes other participating devices in the same conference
- Fast and easy test result interpretation with knowledge-base assistance



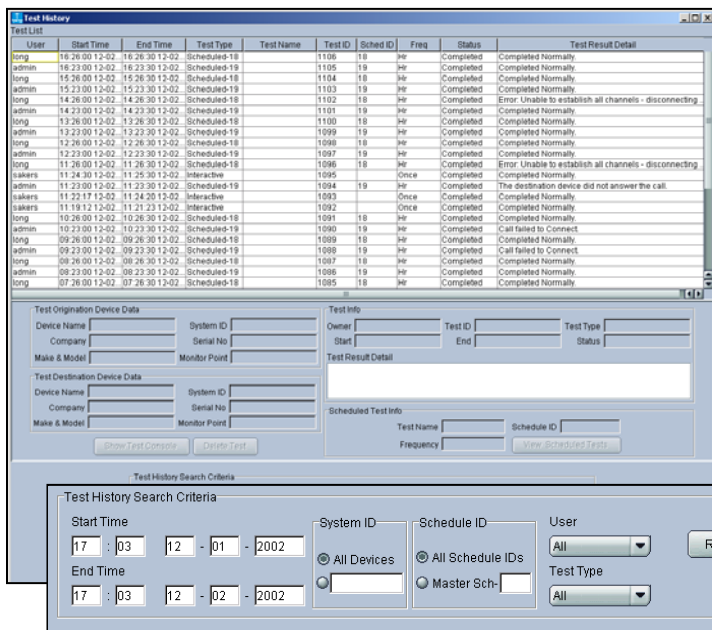
Proactive Network Management

- Automated testing and scheduling
- Pre-conference endpoint and network element testing
- Automatic interval testing of endpoints and network elements



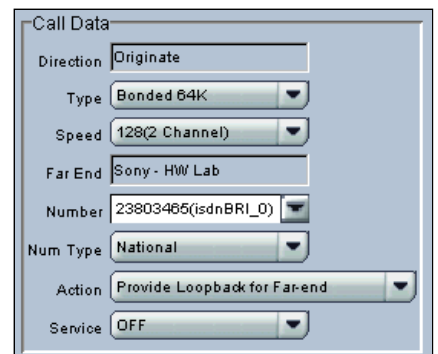
Functional User Interface

- Tests and monitors "transactions," not "components"
- Fast and easy administration of endpoints, network elements, and test equipment
- Select origination and destination endpoints
- Associated monitoring equipment selected automatically
- Test equipment settings filled in automatically



Historical Trends

- Searchable database
 - History of test results
 - History of alarms



T-Synergy Corporation Confidential

This document is confidential and proprietary. It is the property of T-Synergy Corporation and shall not be reproduced or copied or used in whole or in part as the basis for manufacture or sale of items without written permission. The information in the document is subject to change without notice and should not be construed as a commitment by T-Synergy Corporation. T-Synergy Corporation assumes no responsibility for any errors that appear in this document.