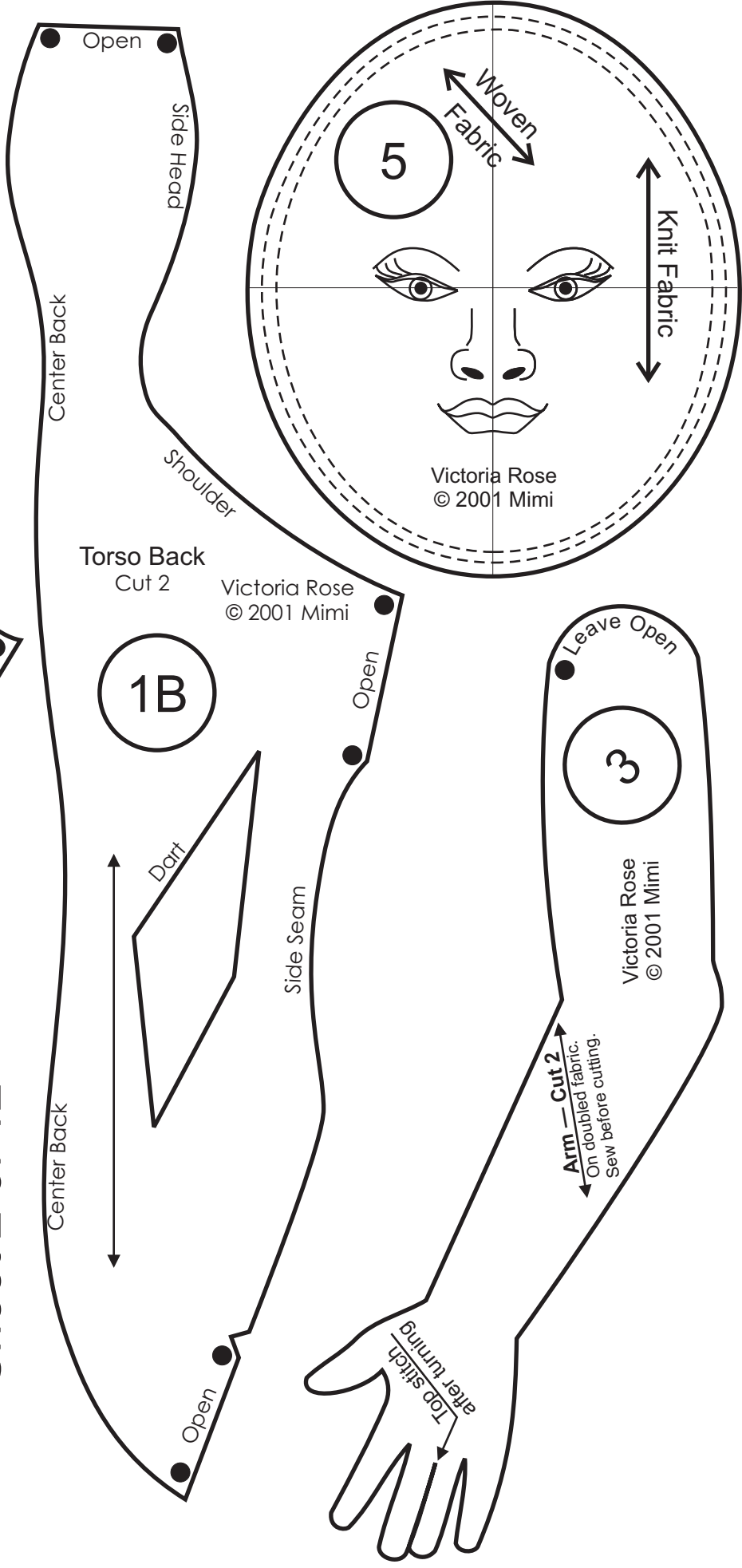


**Victoria Rose © 2001 Mimi**  
**Sheet 2 of 12**



Top stitch  
 after turning

Arm — Cut 2  
 On doubled fabric.  
 Sew before cutting.

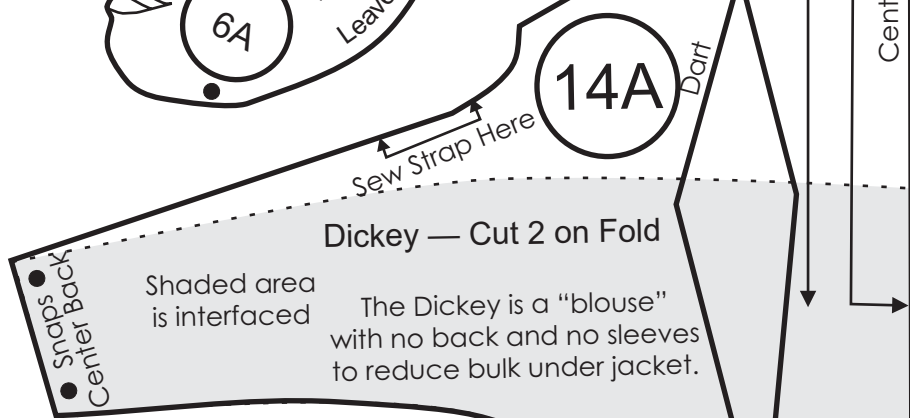
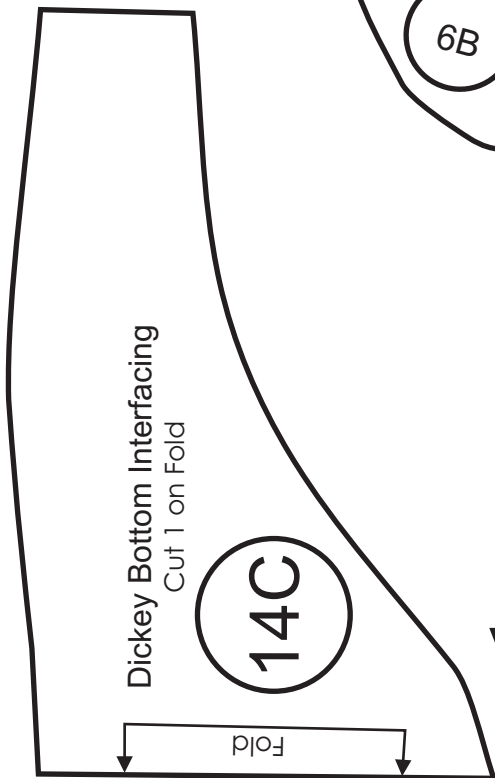
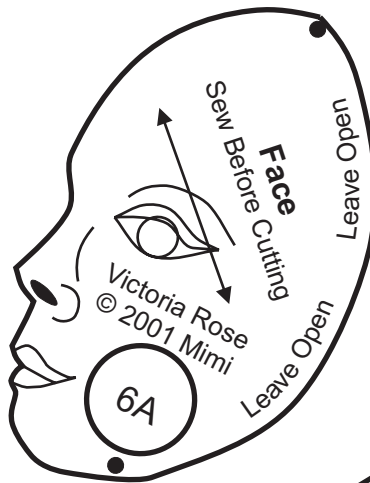
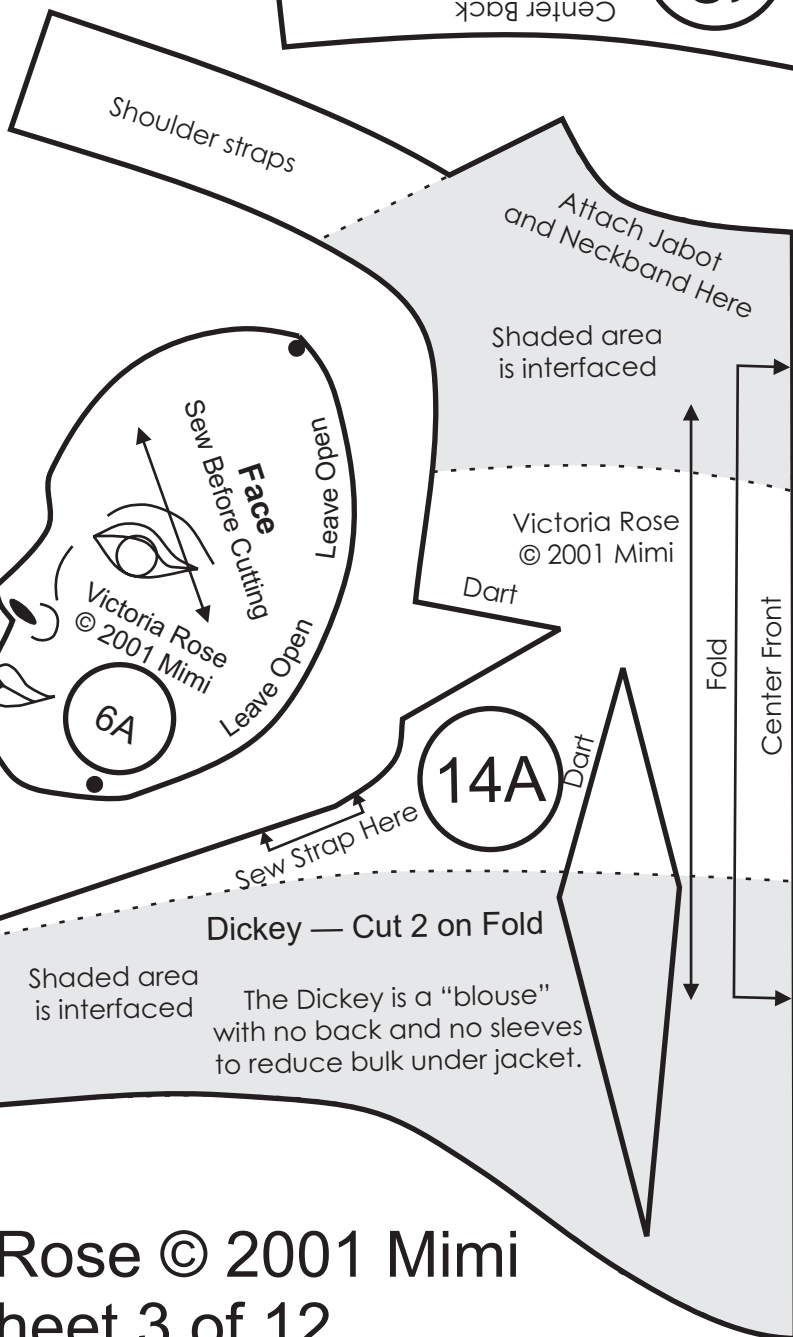
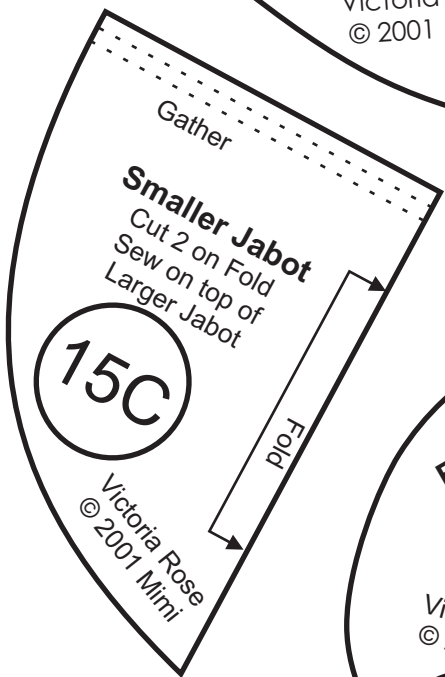
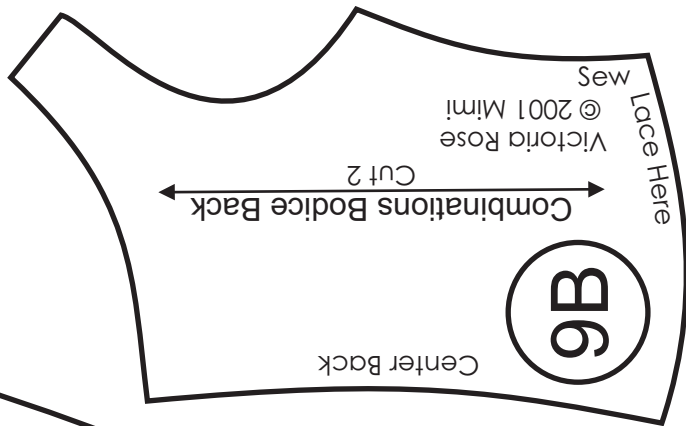
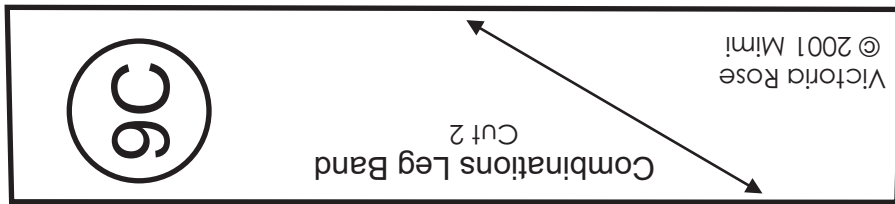
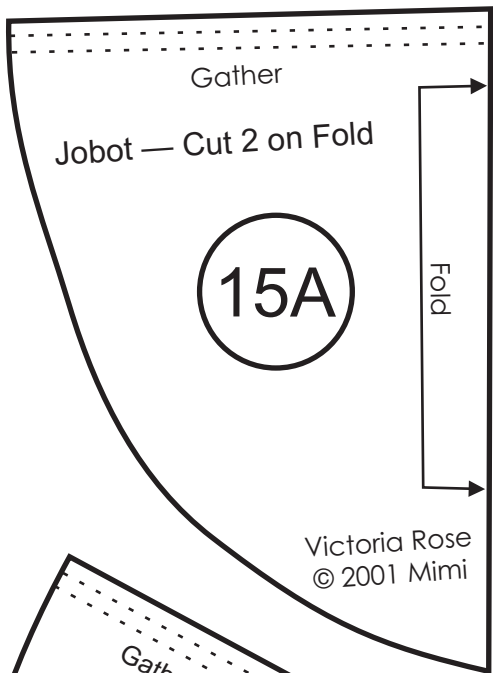
Torso Back  
 Cut 2  
 Victoria Rose  
 © 2001 Mimi

Victoria Rose  
 © 2001 Mimi

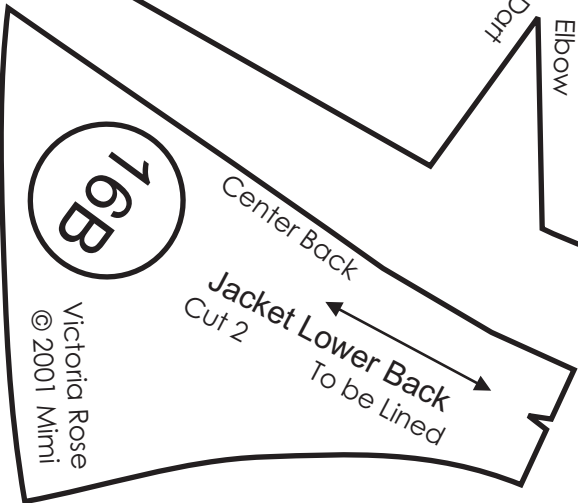
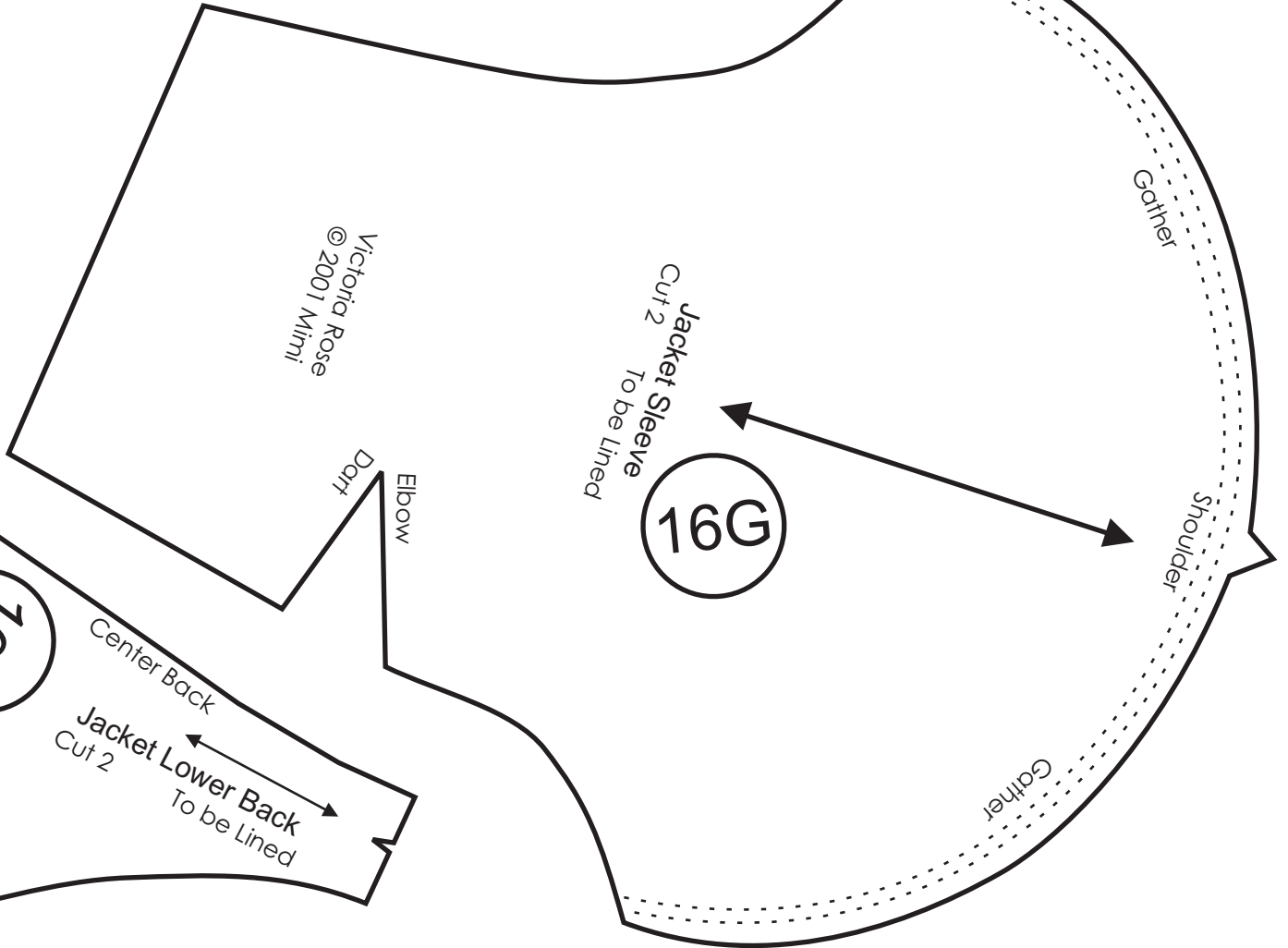
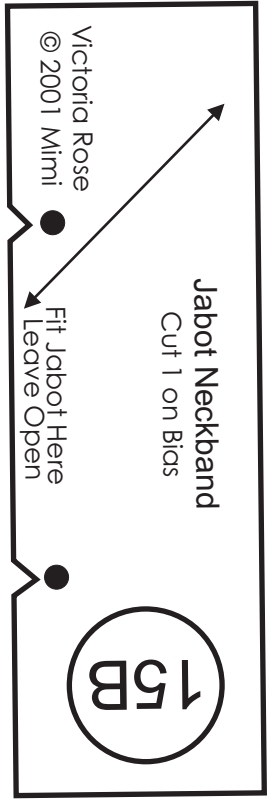
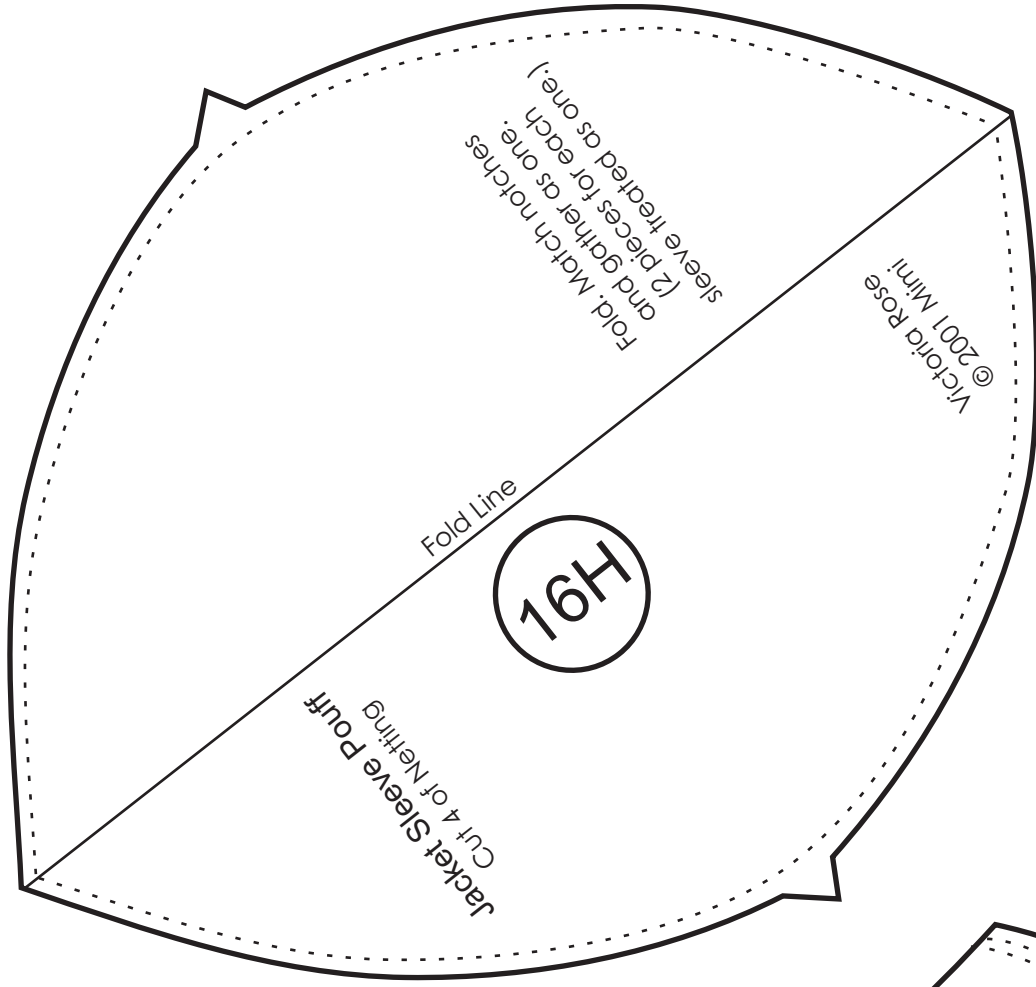
Victoria Rose  
 © 2001 Mimi

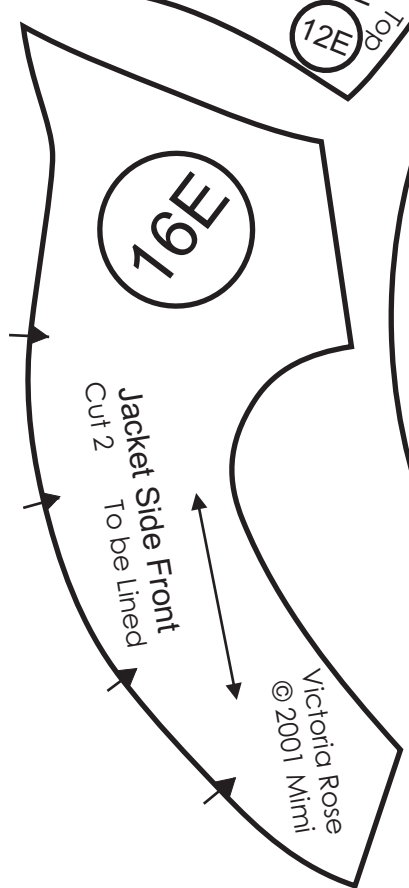
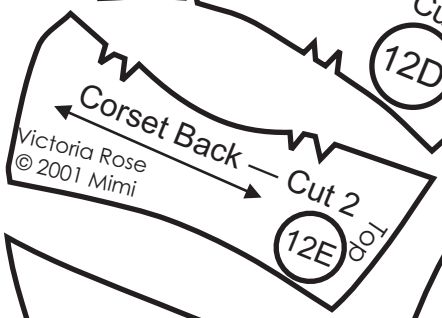
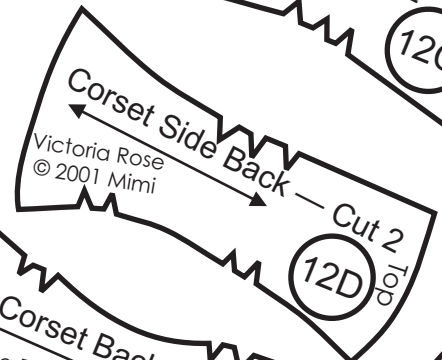
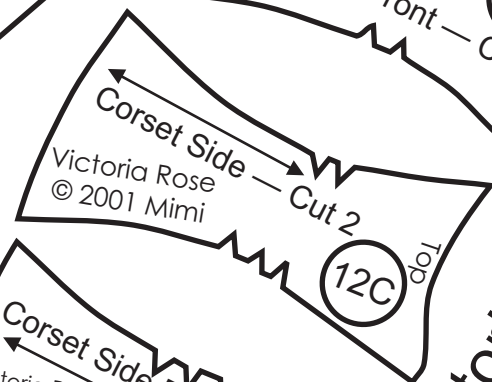
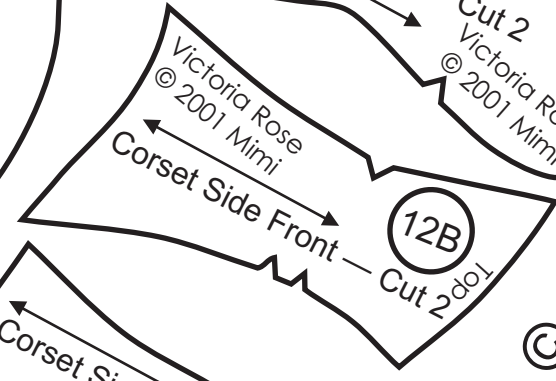
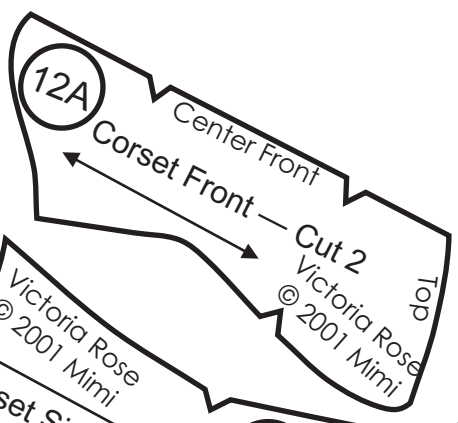
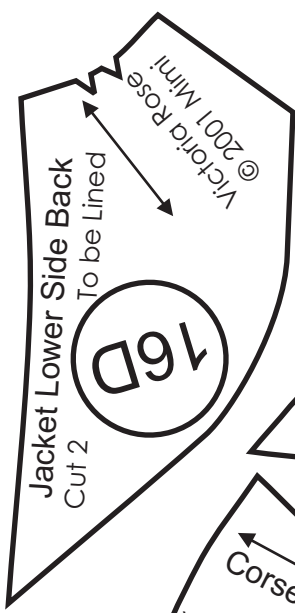
Victoria Rose  
 © 2001 Mimi

Victoria Rose  
 © 2001 Mimi

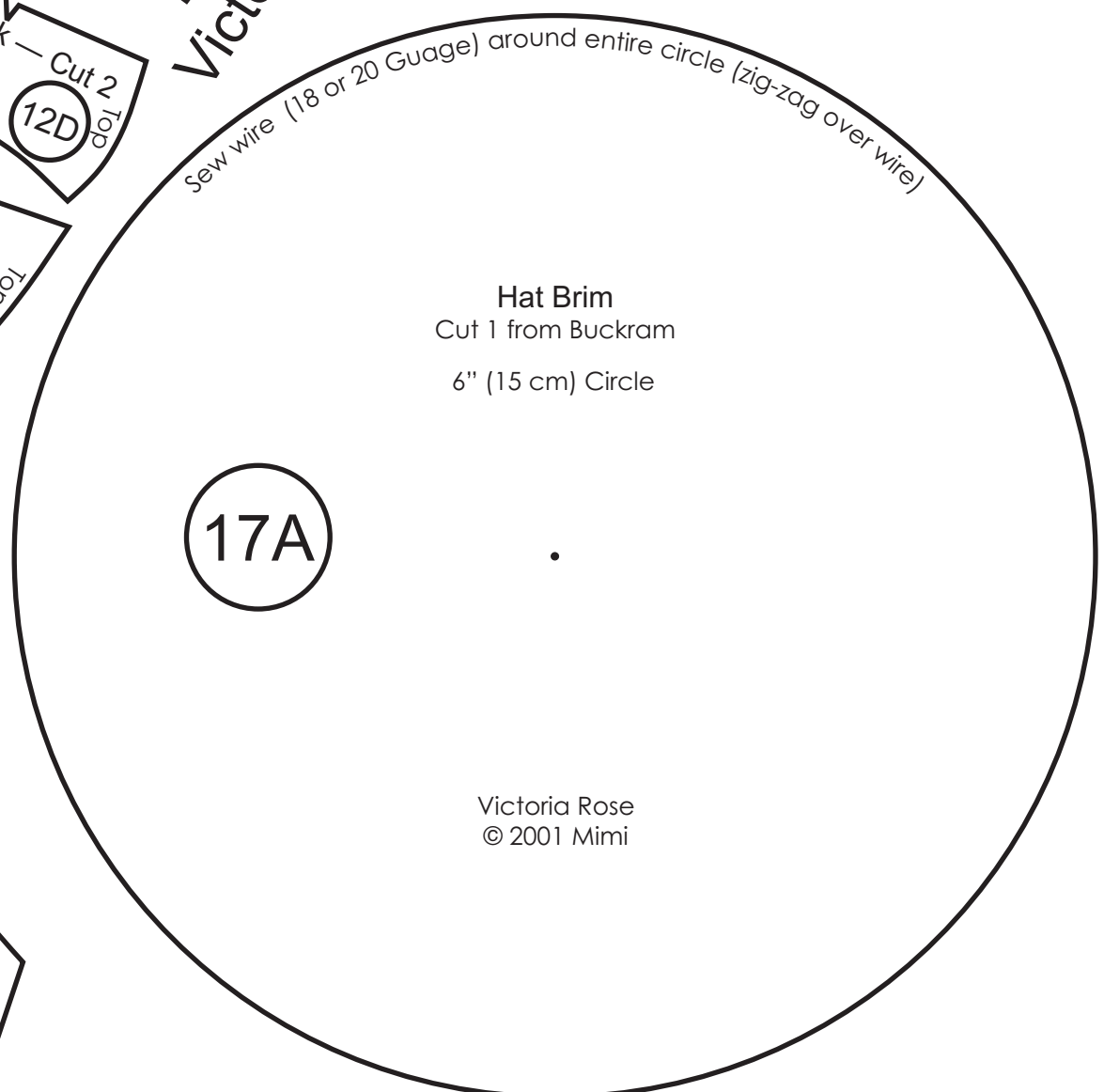
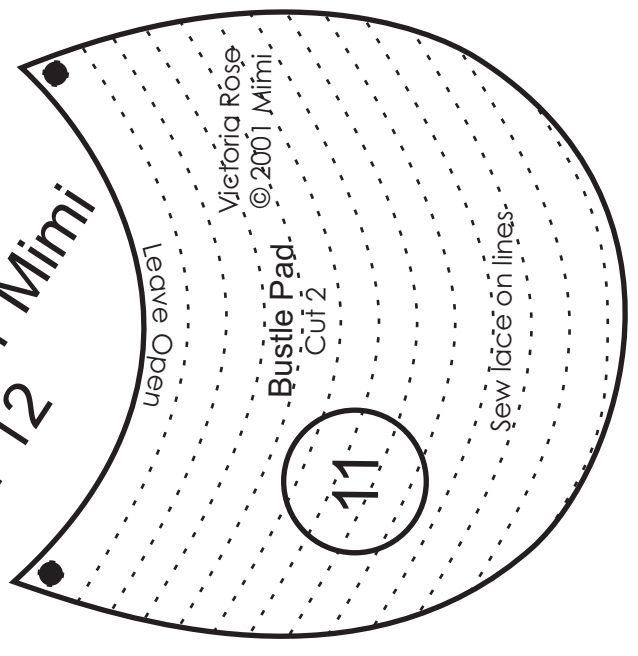


# Victoria Rose © 2001 Mimi Sheet 4 of 12





Victoria Rose © 2001 Mimi  
 Sheet 5 of 12



Victoria Rose  
 © 2001 Mimi

**Upper Arm Armature**

Cut 2 of #14 AWG Galvanized Steel Wire

Bend to fit pattern



Victoria Rose  
© 2001 Mimi

2-3/4"

Wrap with floral tape from bend to end of long wire

No wrap here  
0"

Heel Top

Fit  
Heel



Cut 2 of Glove Leather  
2 of Paperclay

Victoria Rose  
© 2001 Mimi

Gather Lines

13B

13A

Victoria Rose  
© 2001 Mimi

Match to Front

Match to Side Back

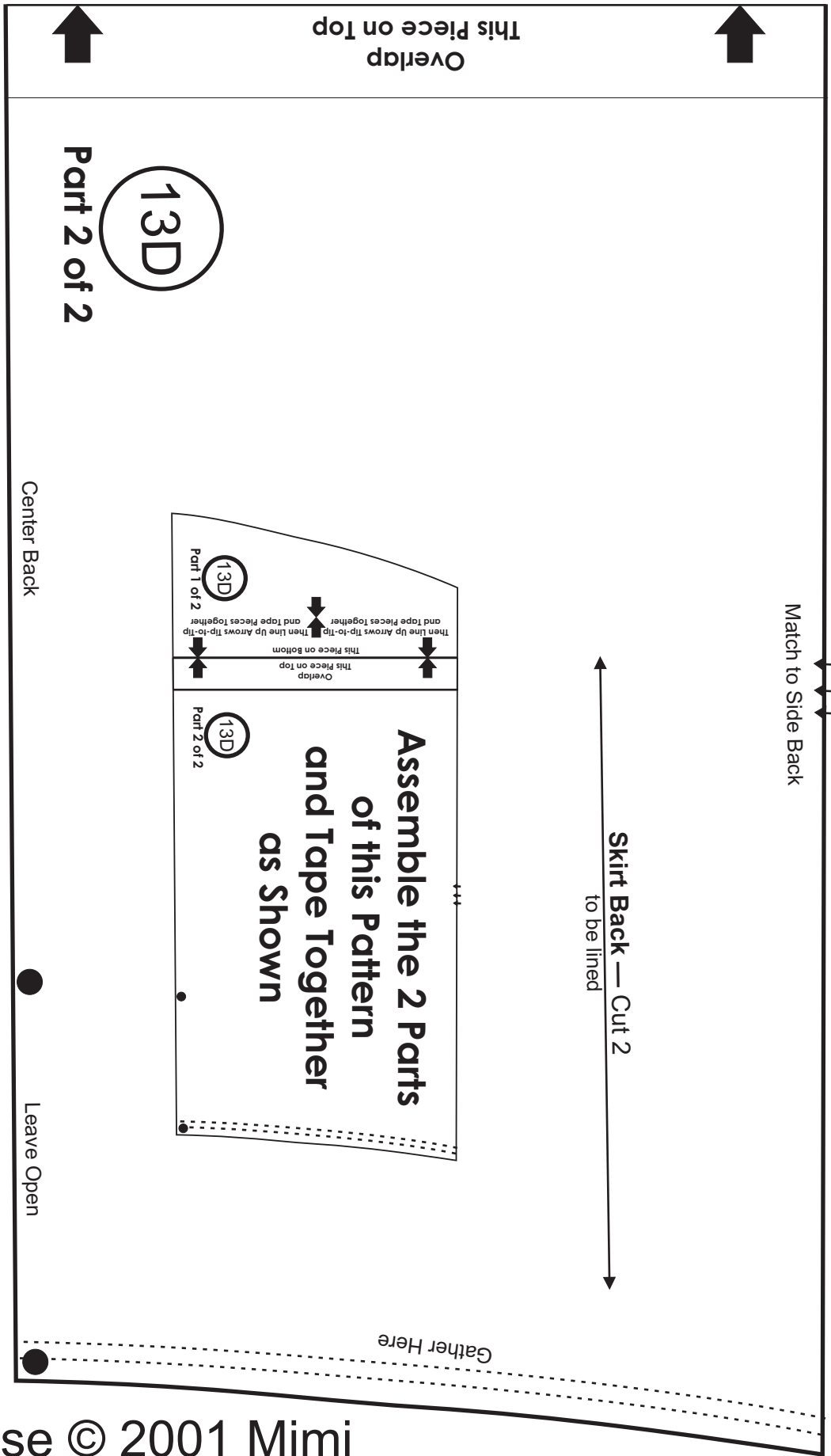
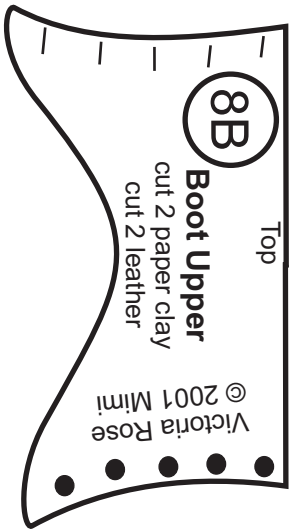
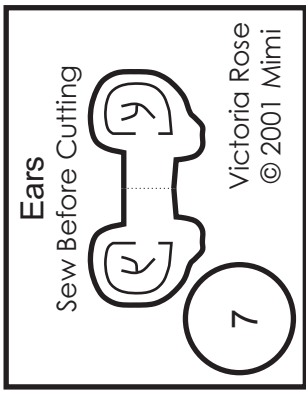
Skirt Side Front — Cut 2  
to be lined

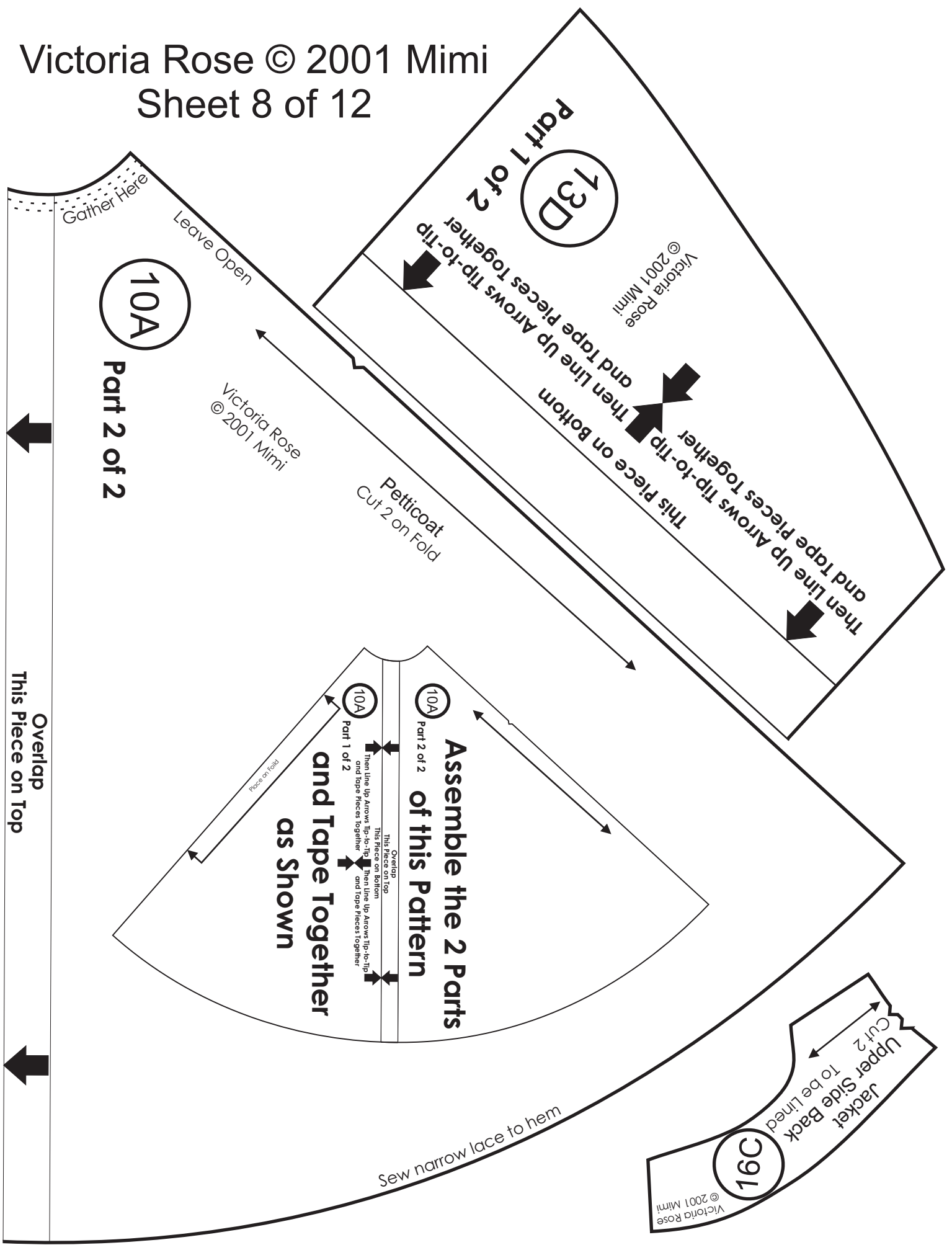
Skirt Front — Cut 2 on Fold  
to be lined

Place on Fold — Center Front

Ease

Victoria Rose  
© 2001 Mimi





**10A**  
 Part 2 of 2

**13D**  
 Part 1 of 2

Victoria Rose  
 © 2001 Mimi

Victoria Rose  
 © 2001 Mimi

Petticoat  
 Cut 2 on Fold

**10A**  
 Part 2 of 2  
**Assemble the 2 Parts  
 of this Pattern  
 and Tape Together  
 as Shown**

**10A**  
 Part 1 of 2  
 This Piece on Bottom  
 and Tape Pieces Together

**16C**  
 Victoria Rose  
 © 2001 Mimi

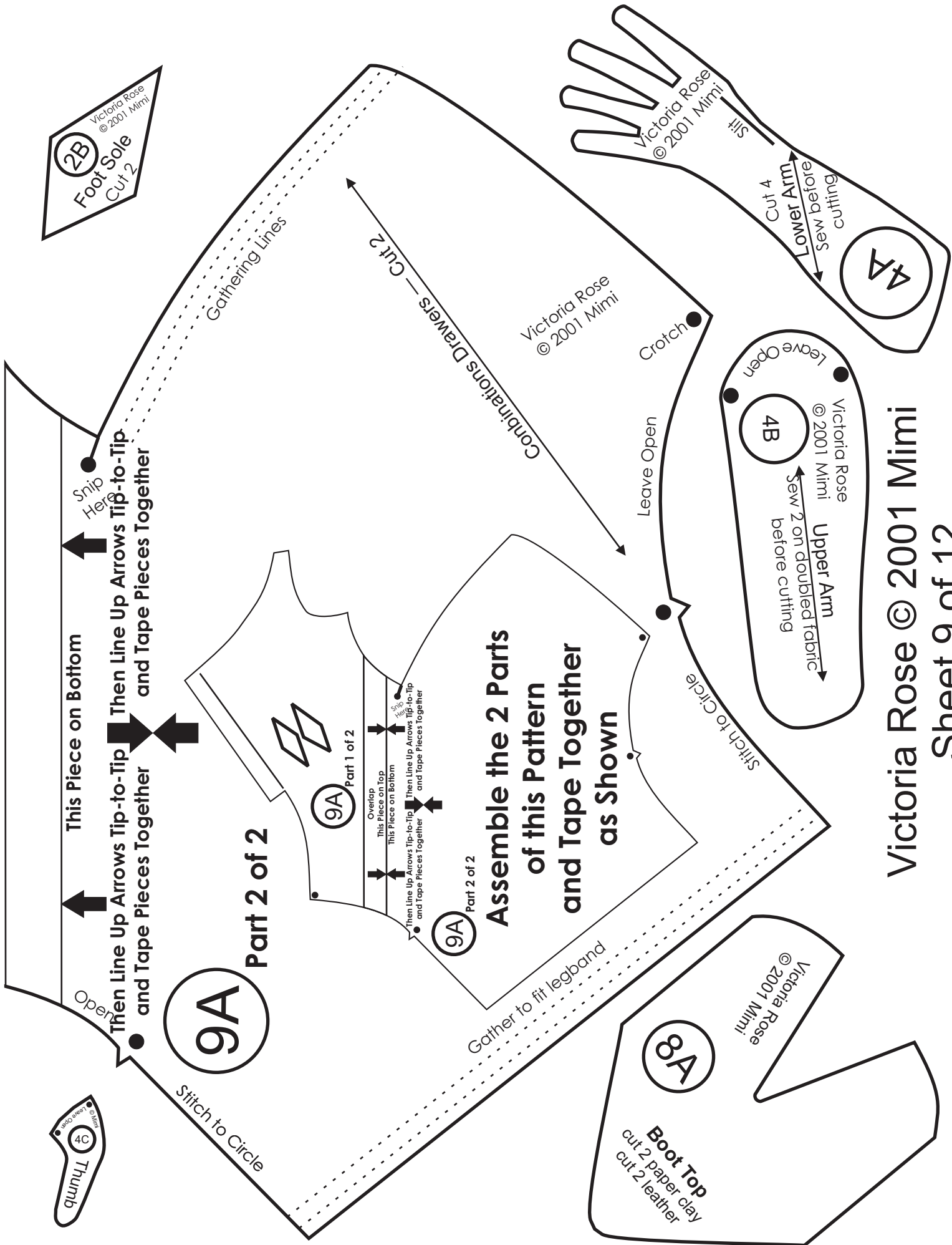
Jacket  
 Upper Side Back  
 To be Lined  
 Cut 2

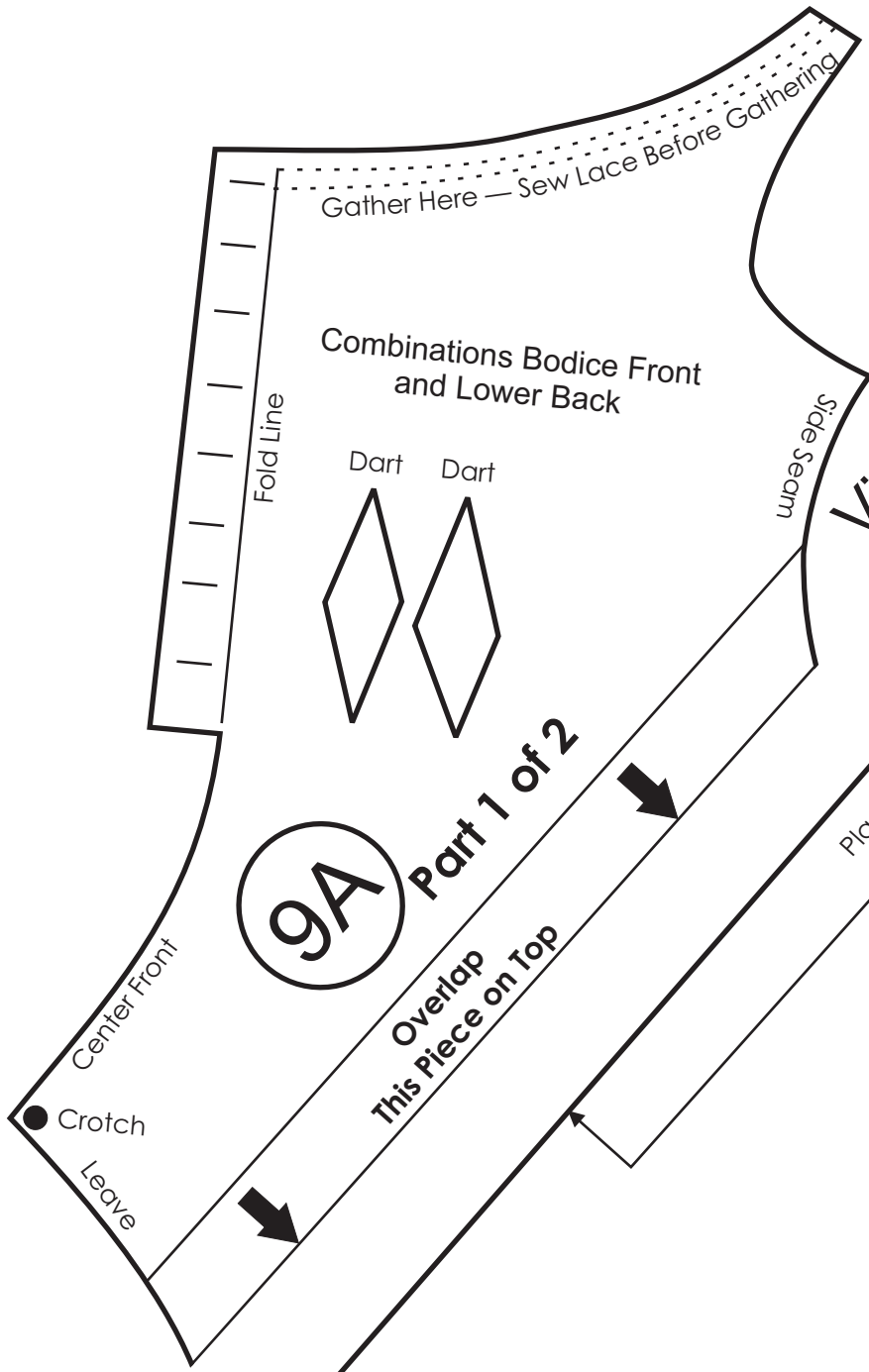
Sew narrow lace to hem

Overlap  
 This Piece on Top









9A

Combinations Bodice Front  
and Lower Back

Dart Dart

Fold Line

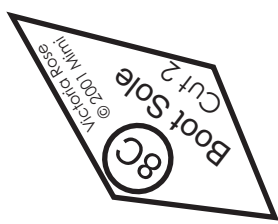
Gather Here — Sew Lace Before Gathering

Side Seam

Center Front  
Crotch  
Leave

Part 1 of 2  
Overlap  
This Piece on Top

Place on Fold



8C  
Boot Sole  
Cut 2  
Victoria Rose © 2001 Mimi

Sew narrow lace to hem

10A

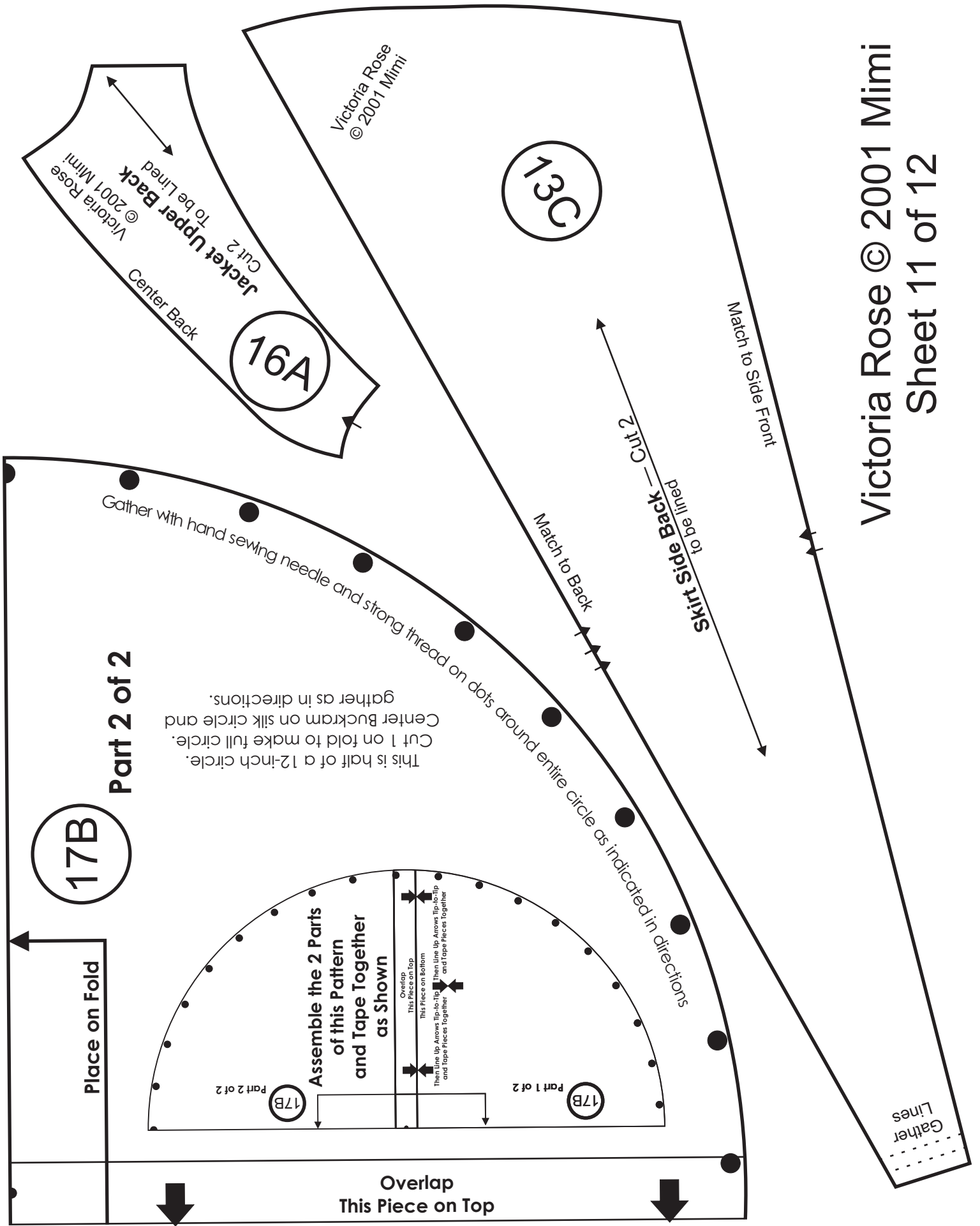
Part 1 of 2

Then Line Up Arrows Tip-to-Tip  
and Tape Pieces Together

Then Line Up Arrows Tip-to-Tip  
and Tape Pieces Together

This Piece on Bottom

Gather Here



Victoria Rose  
© 2001 Mimi

13C

16A

Victoria Rose  
© 2001 Mimi  
Jacket Upper Back  
Cut 2 - To be Lined

Center Back

Match to Side Front

Skirt Side Back — Cut 2  
Pull eq. of

Match to Back

This is half of a 12-inch circle.  
Cut 1 on fold to make full circle.  
Center Buckram on silk circle and  
gather as in directions.

Part 2 of 2

17B

Place on Fold

Assemble the 2 Parts  
of this Pattern  
and Tape Together  
as Shown

Overlap  
This Piece on Top  
This Piece on Bottom  
Then Line Up Arrows Tip-to-Tip  
and Tape Pieces Together

Part 1 of 2

Part 2 of 2

Overlap  
This Piece on Top

Gather  
Lines

Victoria Rose © 2001 Mimi  
Sheet 11 of 12

Victoria Rose © 2001 Mimi  
Sheet 12 of 12

